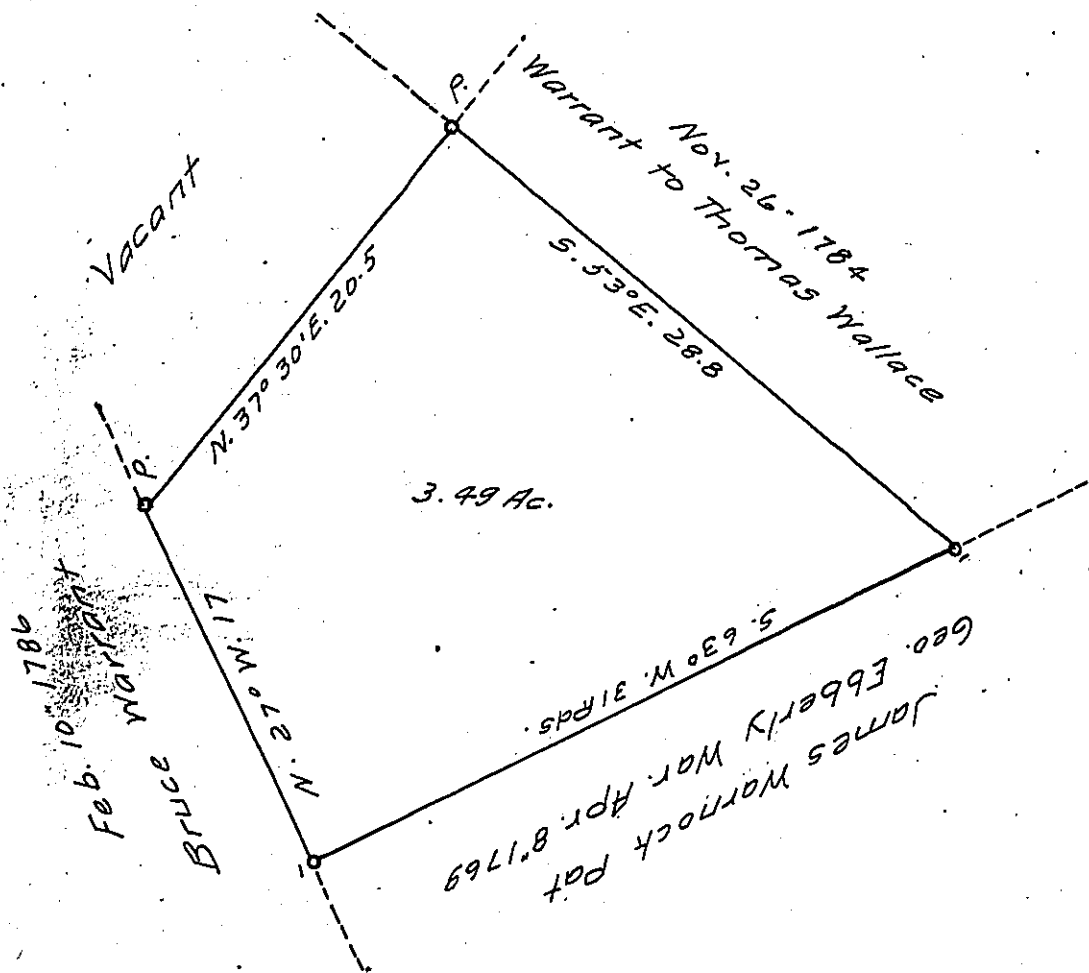


Hopewell
BEAVER



A Draft of a tract of land situate in the Township of Hope-
 well and County of Beaver, containing Three and ⁴⁹/₁₀₀ strict acres,
~~perches and allowance of six per cent. for roads, etc.~~ surveyed
 the 25th day of August ¹⁹¹⁵ 1915, in pursuance of a warrant granted
 to Henry Cooper, dated the Third day of Aug. 1915

Michael Baker

To Hon. Henry Houck,
 Secretary of Internal Affairs }
 County Surveyor.

IN TESTIMONY that the above is a copy of the original remaining on file in
 the Department of Internal Affairs of Pennsylvania, made
 conformably to an Act of Assembly approved the 16th day of
 February, 1833, I have hereunto set my Hand and caused
 the Seal of said Department to be affixed at Harrisburg,
 this third day of February 1916

Henry Houck
 Secretary of Internal Affairs.